



USER MANUAL

## **GoMax NX Smart Vision Accelerator**

Software version: GoPxL 1.0.xx.xx

Document revision: B

# Copyright

Copyright © 2023 by LMI Technologies, Inc. All rights reserved.

## **Proprietary**

This document, submitted in confidence, contains proprietary information which shall not be reproduced or transferred to other documents or disclosed to others or used for manufacturing or any other purpose without prior written permission of LMI Technologies Inc.

No part of this publication may be copied, photocopied, reproduced, transmitted, transcribed, or reduced to any electronic medium or machine readable form without prior written consent of LMI Technologies, Inc.

## **Trademarks and Restrictions**

GoMax™ and Gocator™ are registered trademarks of LMI Technologies, Inc. Any other company or product names mentioned herein may be trademarks of their respective owners.

Information contained within this manual is subject to change.

## **Contact Information**

LMI Technologies, Inc.  
9200 Glenlyon Parkway  
Burnaby BC V5J 5J8  
Canada

Telephone: +1 604-636-1011

Fax: +1 604-516-8368

[www.lmi3d.com](http://www.lmi3d.com)

# Table of Contents

---

<b>Copyright</b> .....	<b>2</b>
<b>Table of Contents</b> .....	<b>3</b>
<b>Introduction</b> .....	<b>4</b>
<b>Interface Overview</b> .....	<b>6</b>
<b>Safety and Maintenance</b> .....	<b>8</b>
Electrical Safety .....	8
Cleaning and Maintenance .....	8
Environment .....	8
<b>Hardware Overview</b> .....	<b>10</b>
<b>Protocol Support</b> .....	<b>11</b>
<b>Adding GoMax NX to a Sensor System</b> .....	<b>12</b>
Connecting Power .....	13
Setting the IP Address .....	15
Discovering a GoMax NX IP Address .....	18
Mounting .....	19
Using DIN Rail Clips .....	19
Mounting to a Wall or Frame .....	19
Connecting GoMax NX to a Sensor System .....	21
<b>Using GoMax NX</b> .....	<b>23</b>
Accessing GoMax NX .....	24
Starting and Stopping Acceleration .....	26
Accelerating a Sensor .....	26
Stopping Acceleration .....	28
Upgrading and Restoring GoMax NX .....	31
Monitoring the GoMax NX Health Status .....	33
<b>Specifications</b> .....	<b>34</b>
GoMax NX .....	35
<b>Troubleshooting</b> .....	<b>38</b>
<b>Return Policy</b> .....	<b>39</b>
<b>Software Licenses</b> .....	<b>40</b>
<b>Support</b> .....	<b>43</b>
<b>Contact</b> .....	<b>44</b>

# Introduction



GoMax NX is *only* compatible with Gocator firmware 6.1 SR1 (firmware version 6.1.29.3) and later or GoPxL 1.0 and later. Loading an earlier firmware version will make the device unusable.

### Notational Conventions

This documentation uses the following notational conventions:



Follow these safety guidelines to avoid potential injury or property damage.

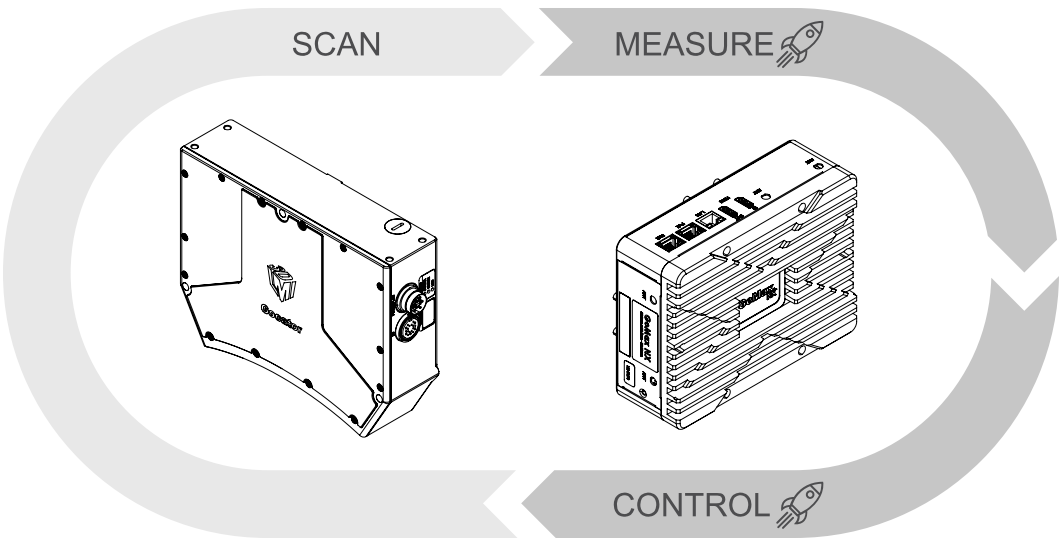


Consider this information in order to make best use of the product.

The GoMax NX Smart Vision Accelerator is a hardware solution that accelerates any Gocator sensor to meet inline production speeds, without the need for a PC. The plug and play functionality of GoMax NX lets you quickly and easily add powerful data processing to a Gocator system, achieving faster cycle times and enhancing overall inspection performance.

GoMax NX provides this compute power thanks to its 384-core GPU and 48 Tensor cores—all in a compact, rugged case.

To accelerate sensors, GoMax NX takes over a portion of the sensor’s data processing (data generation, 3D measurement, and control).



*Relationship between GoMax NX (right) and a sensor (left)*

GoMax NX is ideal for accelerating a single Gocator snapshot sensors (such as Gocator 3506) or multi-sensor Gocator laser or confocal line profile sensor systems.

The Ethernet-based output protocols (Gocator, EtherNet/IP, ASCII, Modbus, and PROFINET) are also identical to those found on an unaccelerated sensor, and are fully supported.

The web interface on an accelerated sensor is identical to the interface on an unaccelerated sensor. For this reason, after you have configured GoMax NX, you should refer to the GoPxL user manuals, available on LMI's website.



GoMax NX is *only* compatible with Gocator firmware 6.1 SR1 (firmware version 6.1.29.3) and later or GoPxL 1.0 and later. Loading an earlier firmware version will make the device unusable.

### Notational Conventions

This documentation uses the following notational conventions:



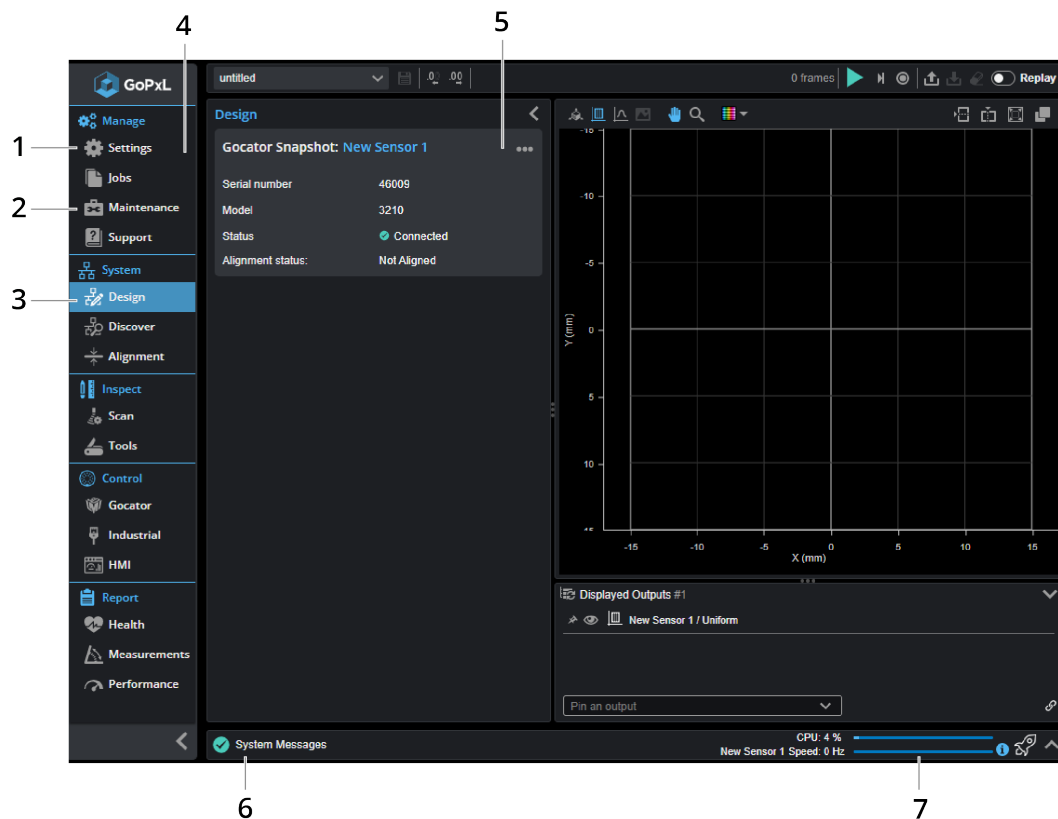
Follow these safety guidelines to avoid potential injury or property damage.



Consider this information in order to make best use of the product.

# Interface Overview

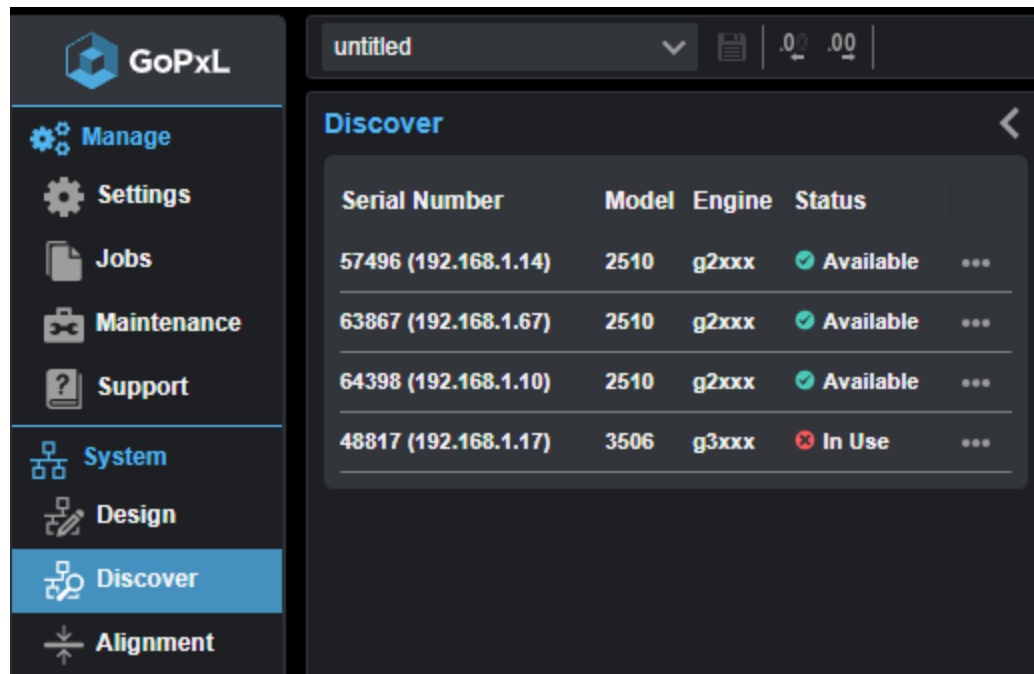
As with Gocator sensors, you configure GoMax NX using a web interface.



Click the icons along the left of the web interface (in the nav bar) to switch between pages that contain a high-level grouping of settings and functionality.

Element	Description
1 Settings page	Contains settings for configuring the network address of the GoMax NX unit. For more information, see <i>Setting the IP Address</i> on page 15.
2 Maintenance page	Lets you upgrade firmware and perform a factory reset of the GoMax NX unit. For more information, see <i>Upgrading and Restoring GoMax NX</i> on page 31.
3 Design page	Lets you connect sensors to GoMax NX, which starts accelerating the sensors. For more information, see <i>Starting and Stopping Acceleration</i> on page 26. For information on configuring multi-sensor layouts, see the GoPXL user manuals.
4 Nav bar	An expandable area that gives you access to different pages you use to configure sensors.

Element	Description
5 Connected sensor or sensors	Sensors connected to the GoMax NX unit are listed here. The status of connected sensors is listed as "Connected." Connected sensors are also listed on the Discover page with an "In Use" status.



6 CPU Load and Speed	Provides important GoMax NX metrics. The "rocket" icon indicates that the GoMax NX is an accelerating device.
7 System messages	Displays log messages from the GoMax NX unit.

The web interface on an accelerated sensor is identical to the interface on an unaccelerated sensor. The Ethernet-based output protocols (Gocator, EtherNet/IP, ASCII, Modbus, PROFINET) are also identical to those found on an unaccelerated sensor, and are fully supported.

# Safety and Maintenance

The following sections describe the safe use and maintenance of GoMax NX vision accelerators.



GoMax NX is *only* compatible with Gocator firmware 6.1 SR1 (firmware version 6.1.29.3) and later or GoPxL 1.0 and later. Loading an earlier firmware version will make the device unusable.

## Electrical Safety



Failure to follow the guidelines described in this section may result in electrical shock or equipment damage.

### **Sensor systems that GoMax NX is connected to should be connected to earth ground**

All sensors in the system should be connected to earth ground through their housing. All sensors should be mounted on an earth grounded frame using electrically conductive hardware to ensure the housing of the sensor is connected to earth ground. Use a multi-meter to check the continuity between the sensor connector and earth ground to ensure a proper connection.

### **Minimize voltage potential between system ground and sensor ground**

Care should be taken to minimize the voltage potential between system ground (ground reference for I/O signals) and sensor ground. This voltage potential can be determined by measuring the voltage between Analog\_out- and system ground. The maximum permissible voltage potential is 12 V but should be kept below 10 V to avoid damage to the serial and encoder connections.

### **Use the power supply provided with the unit**

If the power supply or cords get damaged, contact LMI Technologies for a replacement.

### **Use care when handling powered devices**

Wires connecting to the GoMax NX unit should not be handled while the unit is powered. Doing so may cause electrical shock to the user or damage to the equipment.

## Cleaning and Maintenance

### **Keep heatsink fins clear and clean**

To avoid overheating of the GoMax NX unit, make sure the unit's heatsink fins are clean and clear.

## Environment

### **Avoid installing the GoMax NX unit in hazardous environments**

To ensure reliable operation and to prevent damage to the GoMax NX unit, avoid installing the unit in locations

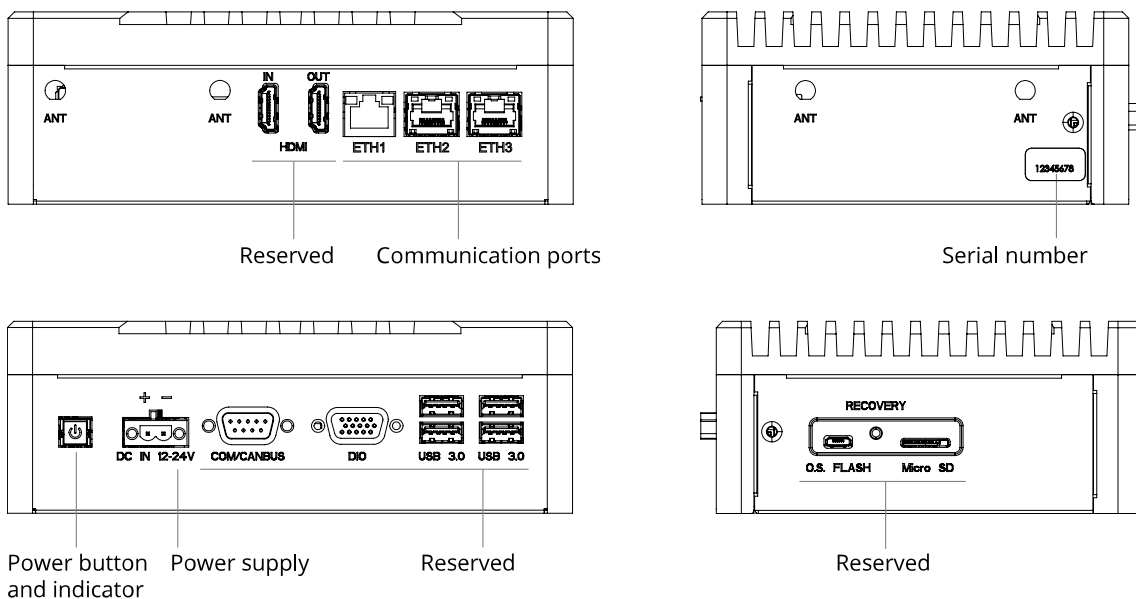
- that are humid, dusty, or poorly ventilated;
- with a high temperature, such as places exposed to direct sunlight;
- where there are flammable or corrosive gases;
- where the unit may be directly subjected to harsh vibration or impact;
- where water, oil, or chemicals may splash onto the unit;
- where static electricity is easily generated.

**Ensure that ambient conditions are within specifications**

GoMax NX units are suitable for operation between -15 and 55 degrees Celcius.

# Hardware Overview

The following illustrates the physical features of a GoMax NX unit.



Item	Description
HDMI IN / OUT	Reserved for future use.
ETH1	Ethernet port. For direct connection to a PC for the initial configuration and to connect the GoMax unit to the sensor system via a hub. PCs and PLCs should only be connected to this Ethernet port.
ETH2	Ethernet port. Sensors can be connected to this port.
ETH3	Reserved for future use.
Power Button and Indicator	Powers the device on and off. Illuminated when power is applied (green).
DC IN 12-24V	Accepts a Phoenix connector for the provided power supply.
COM / CAN bus	Reserved for future use.
DIO	Reserved for future use.
USB 3.0	Reserved for future use.
Ant	Reserved for future use.
Serial Number	Unique sensor serial number.
OS Flash	USB C port. Reserved for future use.
Recovery button	Reserved.
Micro SD	Reserved for future use.

# Protocol Support

GoMax NX supports protocols for communicating with sensors over Ethernet (TCP/IP) and serial output.

## **Protocols available over Ethernet**

- Gocator
- Modbus
- EtherNet/IP
- ASCII
- PROFINET

For an overview of the Ethernet ports used by sensors, see *Required Ports* in the user manual of your sensor.

# Adding GoMax NX to a Sensor System

LMI recommends adding GoMax NX to a sensor system that is already fully set up and configured. For information on setting up a sensor system, see the user manual of the sensors used in the system.

Follow the instructions in the following sections to install and perform the initial configuration of a GoMax NX unit.



Sensors you intend to accelerate using GoMax NX must be running GoPxL 1.0 or higher.

# Connecting Power

Power is provided by the included power supply. The plug type depends on the region in which you are using the unit.

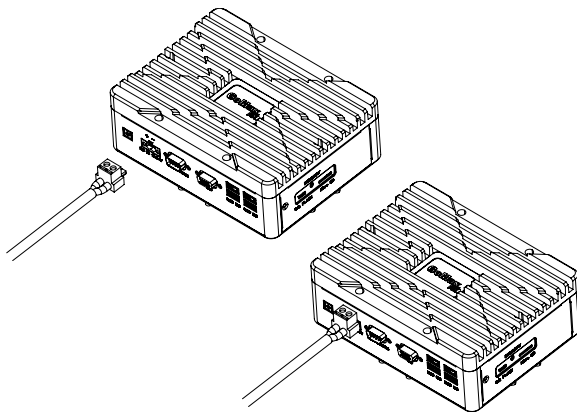


Use *only* the provided power supply with the GoMax NX unit. Using a higher voltage power supply will damage the unit.

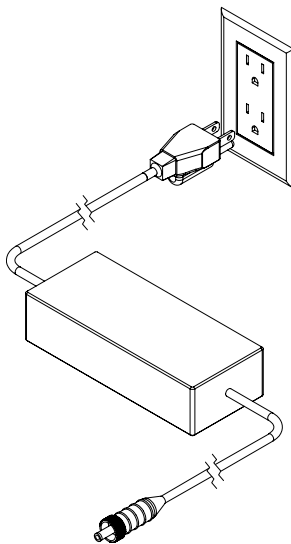
LMI recommends powering up the GoMax NX unit and performing the initial configuration of the unit before physically connecting it to the sensor system.

*To connect power:*

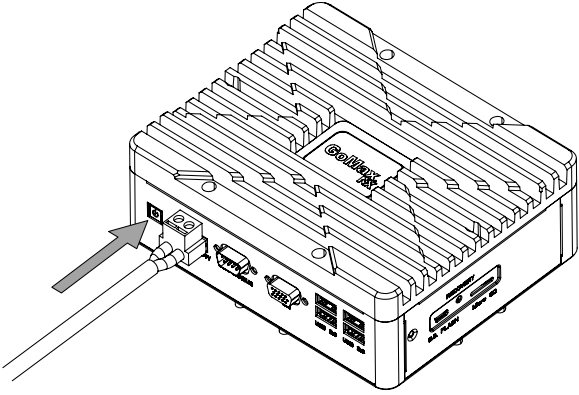
1. Connect the power supply connector to the unit.



2. Plug the power adapter into an available electrical outlet.



3. Press the power button.



An LED indicator on the unit lights when power is applied.  
The unit is ready for initial configuration (setting an IP address).

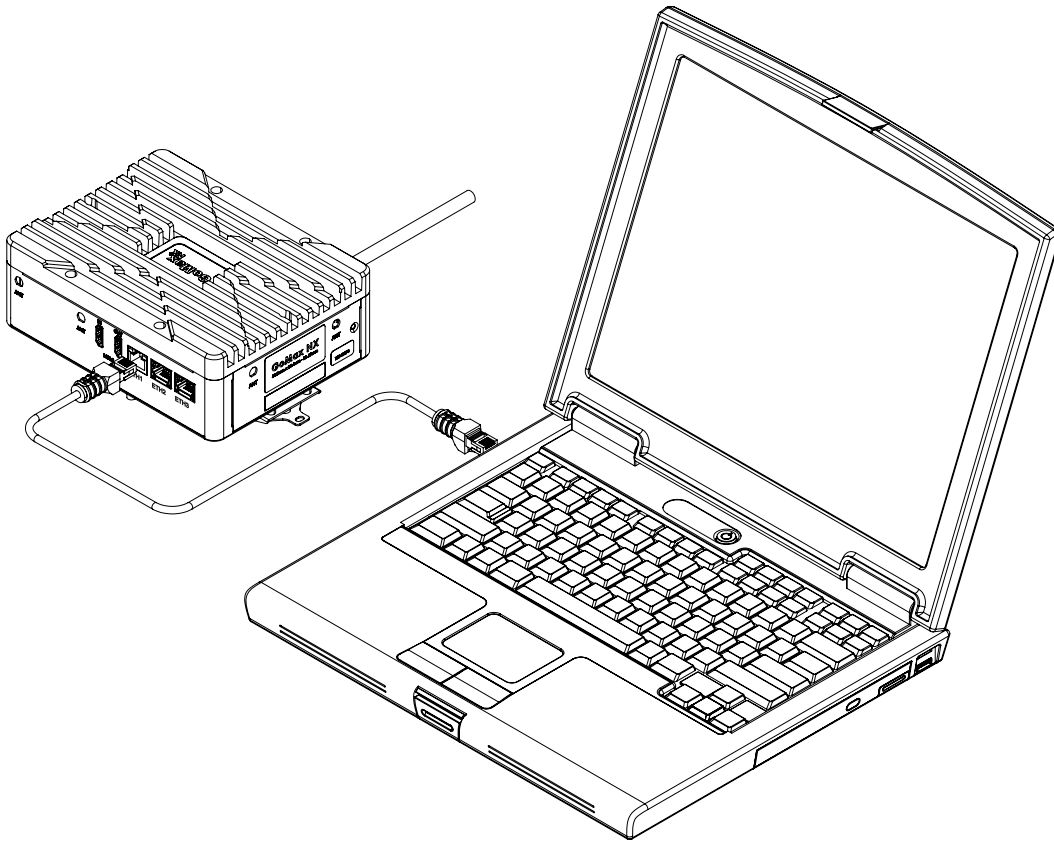
# Setting the IP Address

Each GoMax NX unit and Gocator sensor on the sensor system network must have a unique IP address. By default, the IP addresses of the GoMax NX unit's ETH1 Ethernet port is set to 192.168.1.6. By default, the ETH2 port is set to 192.168.2.6.

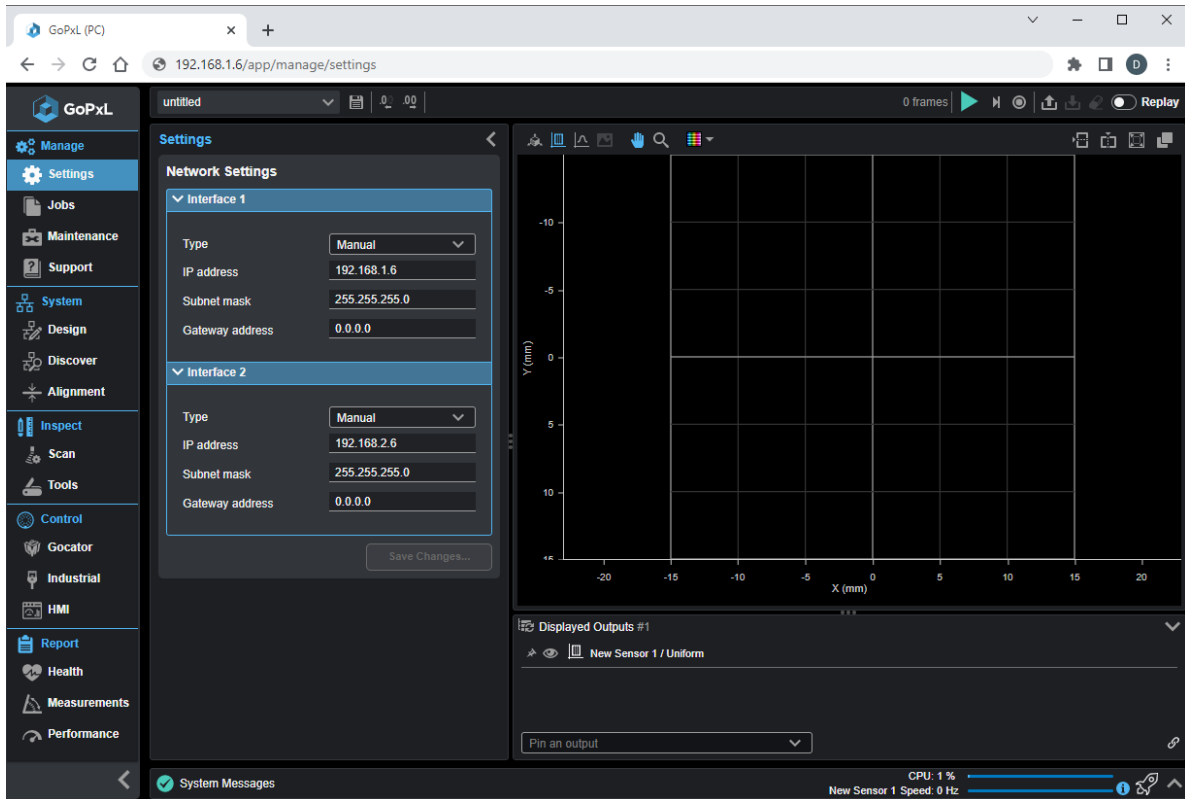
If these addresses conflict with sensors in your sensor system, or if your system will contain multiple GoMax NX units, you will have to set the IP addresses of each GoMax NX unit to avoid conflicts.

*To set the IP address of a GoMax NX unit:*

1. Using an Ethernet cable, first connect a computer directly to the ETH1 port on the GoMax NX unit.

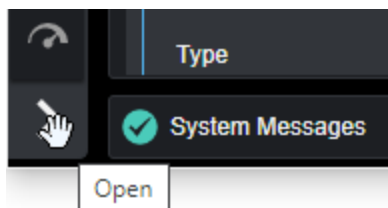


2. On the computer, launch an Internet browser and navigate to 192.168.1.6.  
The GoMax NX web interface is displayed.



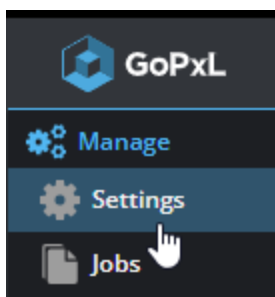
If you can't connect to the GoMax NX unit, or if you don't know what the unit's IP address is, follow the instructions in *Discovering a GoMax NX IP Address* on page 18.

3. If you haven't already done so, in the lower left of the interface, click the open icon to pin the navigation bar on the left.



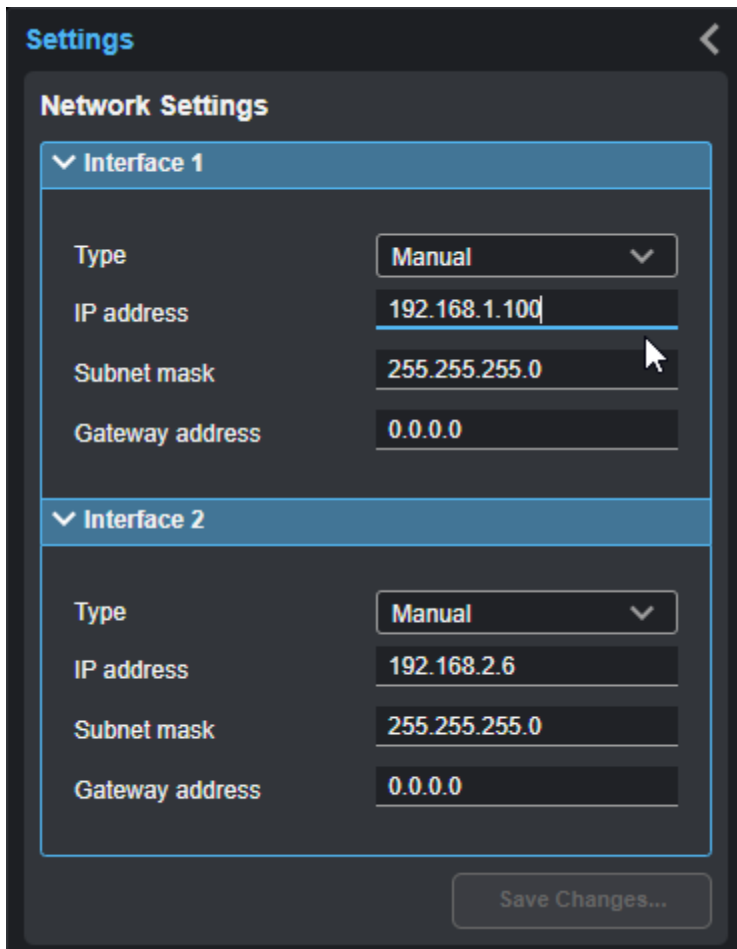
It's not necessary to do this, but for first-time users, it can help understand the user interface more quickly.

4. If the **Settings** page isn't already displayed, click **Settings** in the navigation bar.



The **Settings** page is displayed (see above).

5. Under **Network Settings**, under **Interface 1** or **Interface 2**, set the IP address and click **Save Changes**.



The GoMax NX unit restarts after you confirm you want to continue with the changes. Changing network settings stops the acceleration of any accelerated sensors.

After the GoMax NX unit restarts, its IP address is changed.

6. Disconnect the laptop from the GoMax NX unit.

# Discovering a GoMax NX IP Address

If you can't find or connect to a GoMax NX unit, use the GoPxL Discovery tool to find it on your network. You identify a GoMax NX unit by looking for "gomax" in the Application ID column. The tool also lets you launch the GoMax NX interface in your browser.

The screenshot shows the GoPxL Discovery tool interface. On the left, there are network configuration fields for IP Address (192.168.1.6), Mask (255.255.255.0), and Gateway (0.0.0.0). Below these are buttons for 'Restore Defaults', 'Apply', 'Launch GUI', 'Restart Device', and 'Factory Restore'. The main area contains a table with the following data:

Device/Application Name	Device Type	IP Address	Version	Application ID	Control Port	Web Port	Gdo Port
63867	2510	192.168.1.67	1.0.109.203	sensor-63867	3600	80	3601
999002		192.168.1.6	1.0.109.203	gomax-409611	3600	80	3601
57496	2510	192.168.1.14	1.0.109.203	sensor-57496	3600	80	3601
64398	2510	192.168.1.10	1.0.109.203	sensor-64398	3600	80	3601
48817	3506	192.168.1.17	1.0.109.203	sensor-48817	3600	80	3601
GoPxL_1		192.168.109.53	1.0.109.203	ce5e25..d0c1b4	3600	8100	3601

At the bottom right, there is an 'Auto Refresh' toggle switch and a 'Refresh Table' button. The status is shown as 'Status: OK'.

# Mounting

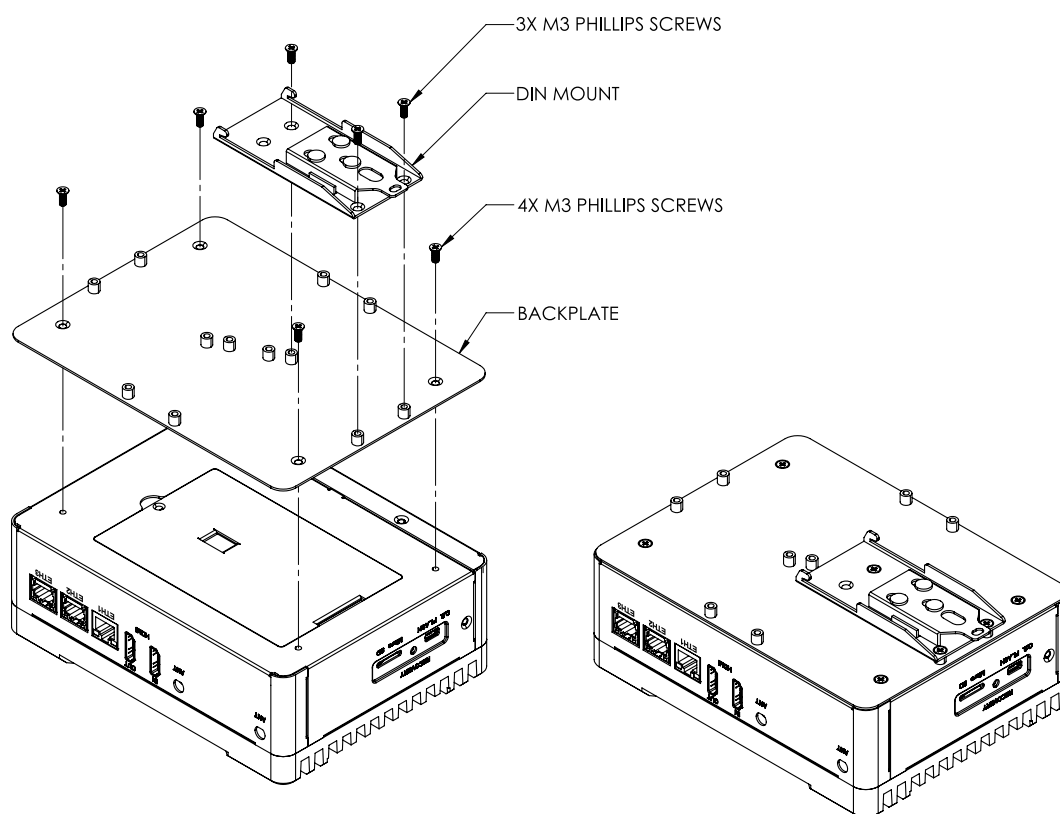
You can mount GoMax NX units to a DIN rail or directly to a wall or frame using the provided mounting hardware.

For details on GoMax's dimensions and mounting holes, see *GoMax NX* on page 35.

## Using DIN Rail Clips

LMI provides a DIN rail clip plate, a DIN rail clip, and M3 screws to mount GoMax NX on a DIN rail. The plate allows multiple orientations of the unit using different sets of standoffs. Attach the DIN rail clip plate to the back of the unit, and attach the DIN rail clip to the plate in the required orientation.

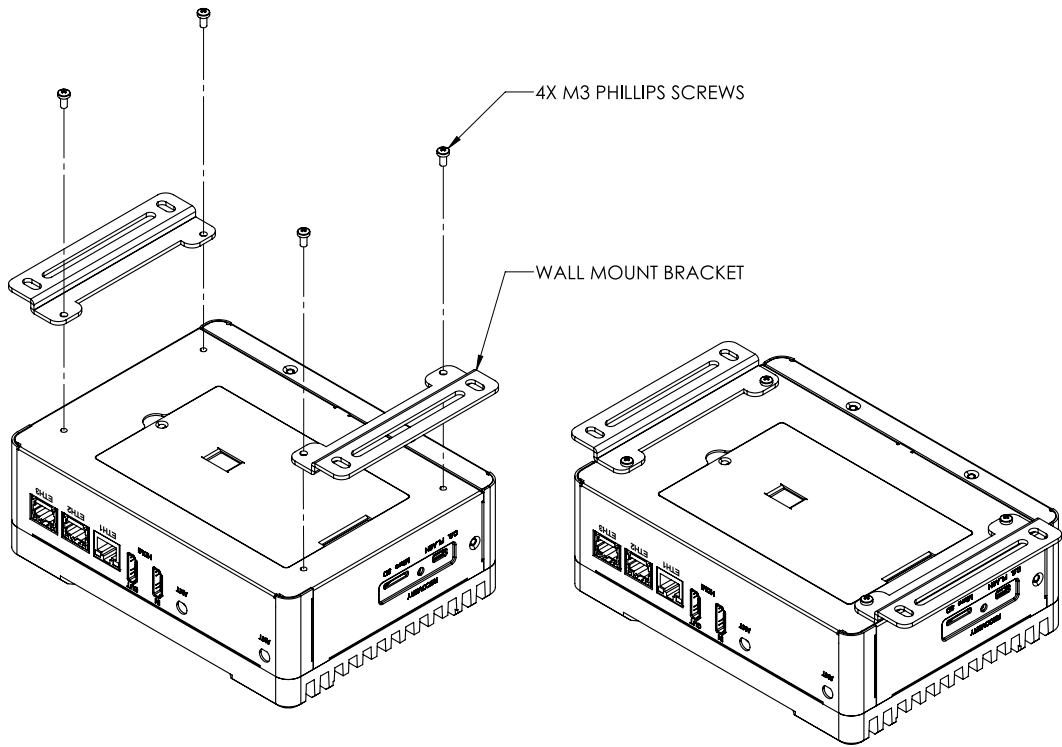
For dimensions with the DIN rail clip attached, see *DIN rail mount dimensions* on page 36.



## Mounting to a Wall or Frame

LMI also provides wall mount brackets to mount the GoMax NX unit directly on a wall or to a frame. To use the wall mount brackets, remove the DIN rail clip plate from the back of the unit, and attach the wall mount brackets to the back of the unit using the provided screws. Make sure that the unit is securely fastened to the wall.

For dimensions with wall mount brackets attached, see *Wall mount dimensions* on page 37.

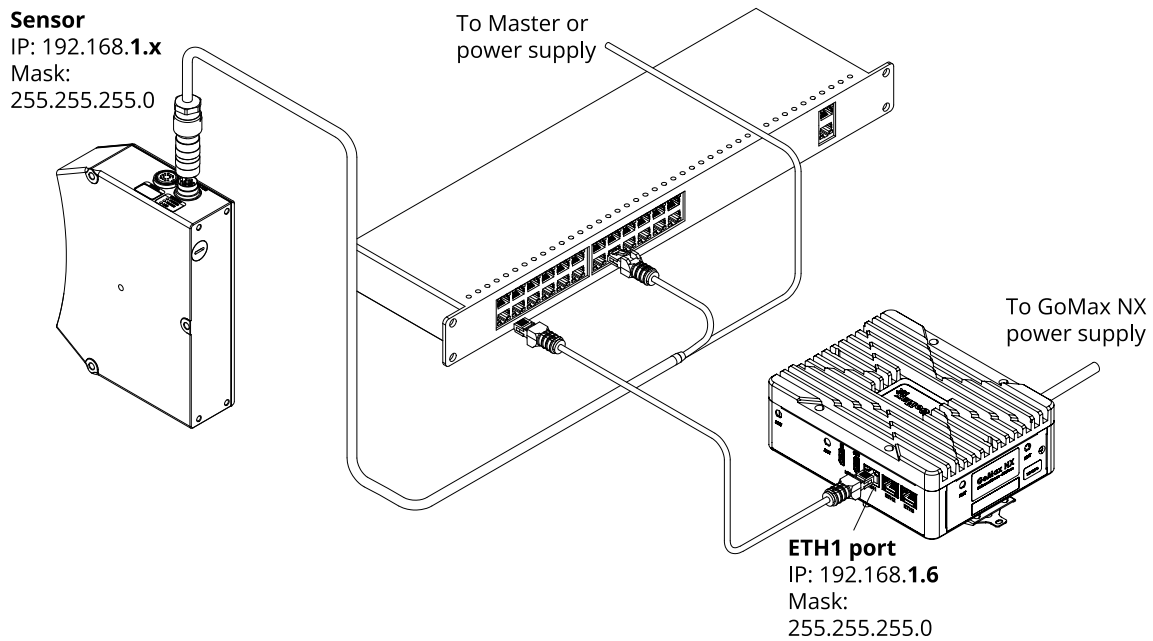


# Connecting GoMax NX to a Sensor System

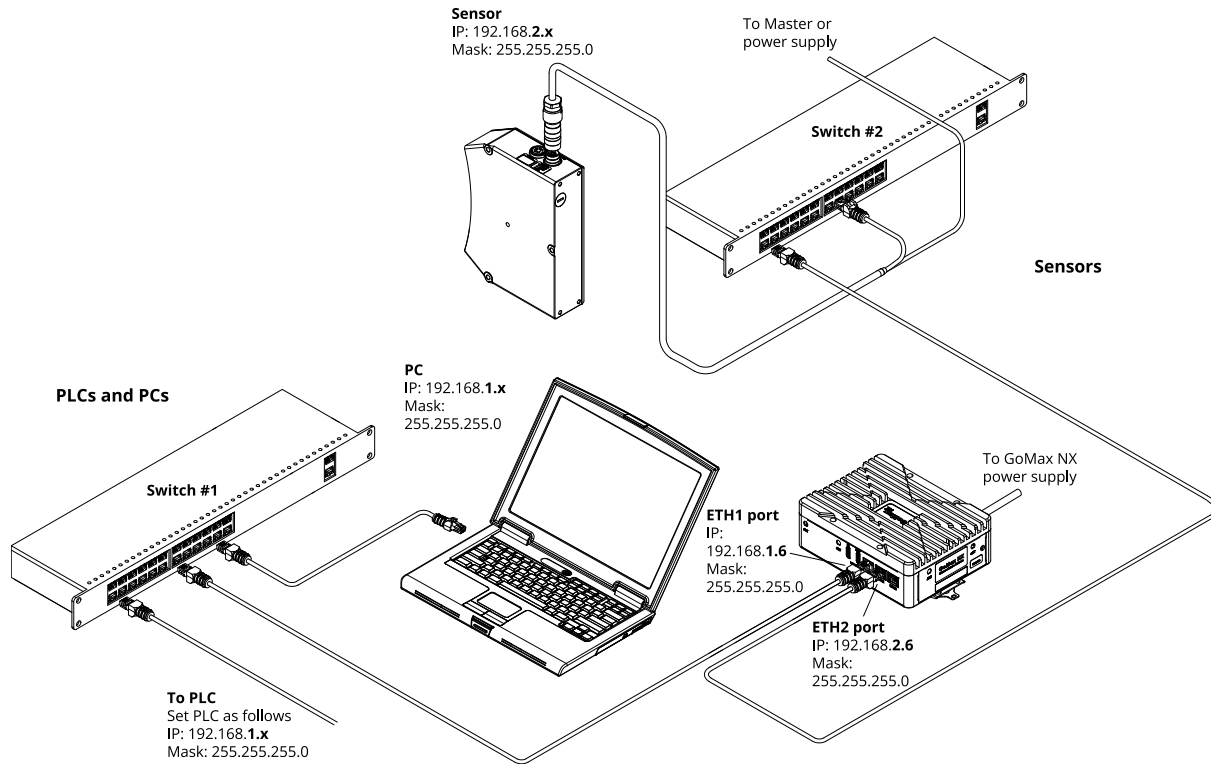
You can add a GoMax NX to your sensor system using a non-isolated or an isolated layout. An isolated layout lets you control visibility of the sensors over the network (that is, hiding a sensor from other parts of a network (for example, from PCs or PLCs). It also lets you adhere to network requirements or regulations.

An isolated layout requires two switches. A non-isolated layout requires one.

If you do not need to isolate the sensor from the rest of your network, you can use the following layout. In this type of layout, connect the GoMax NX unit to the switch with an Ethernet cable using the ETH1 port. Connect the sensor to the same switch.



In an isolated layout, *only* connect PLCs and PCs to the ETH1 port, through one switch. Connect sensors to the GoMax unit's ETH2 port. You must use a different network ID for each part of the network (sensors vs. PCs/PLCs), for example 192.168.1.x for PCs/PLCs and 192.168.2.x for sensors.



# Using GoMax NX

The following sections describe how to access and configure GoMax NX using its web interface, how to start and stop sensor acceleration, and more.

# Accessing GoMax NX

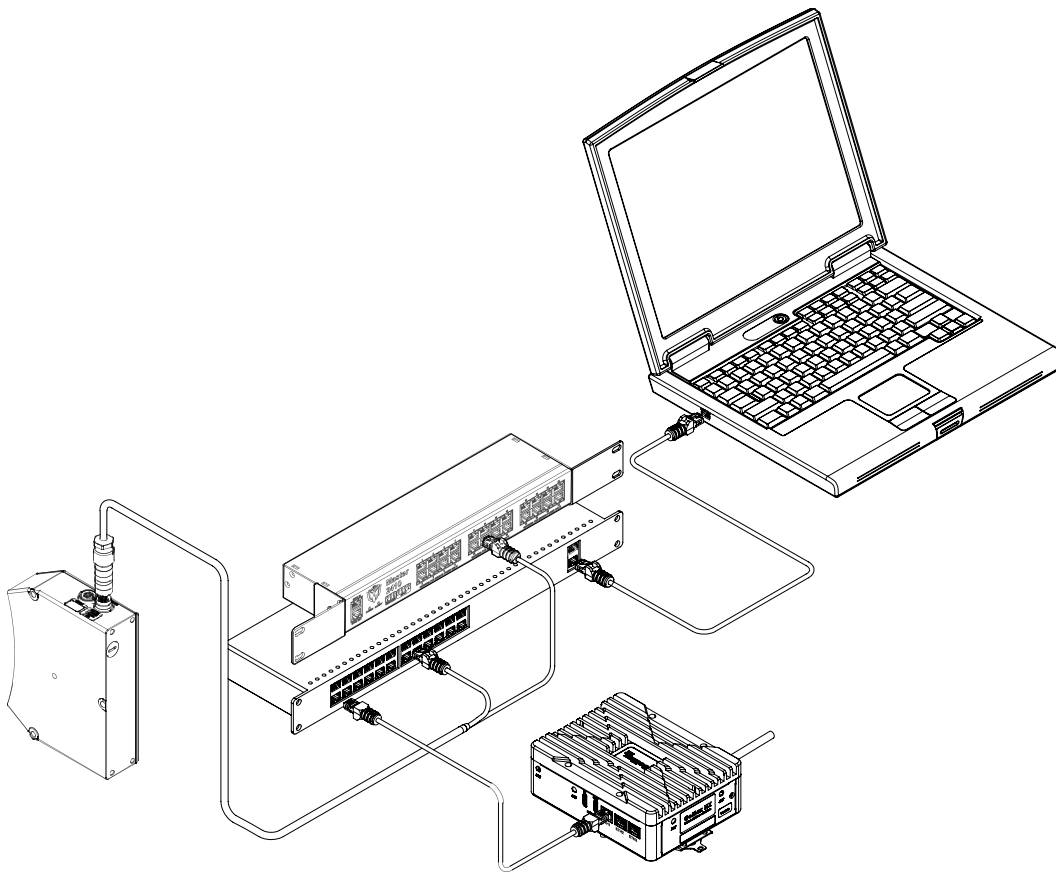
To access the GoMax NX vision accelerator's web interface, you can use a web browser. LMI recommends Chrome, Firefox, or Edge.



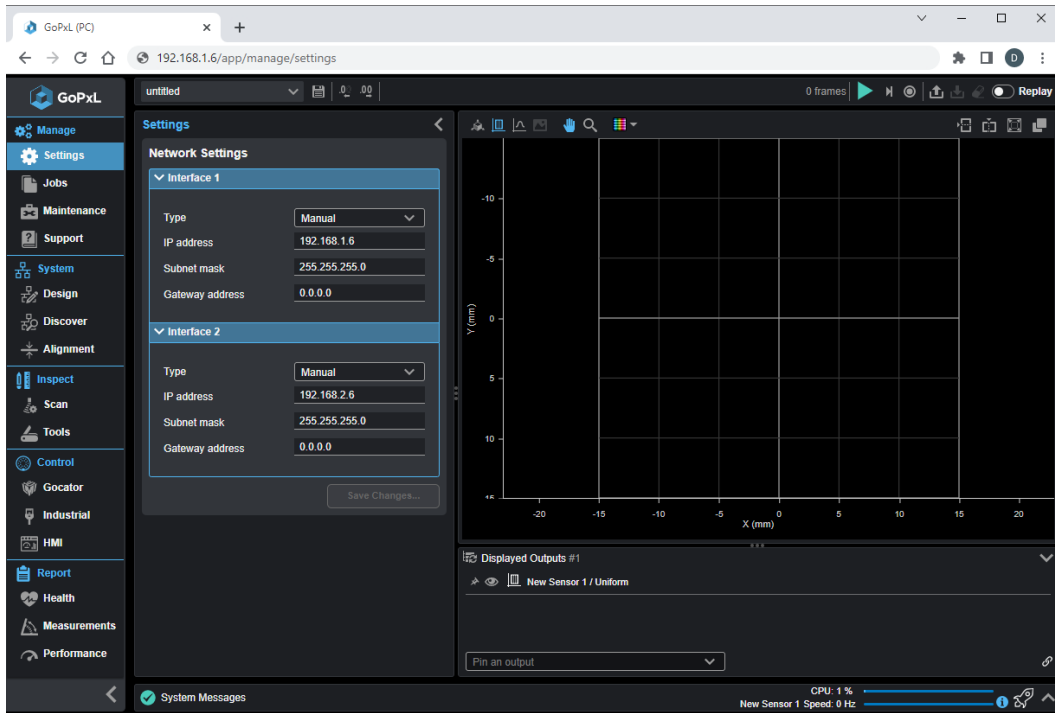
If you are unable to connect to a GoMax NX unit, see *Discovering a GoMax NX IP Address* on page 18.

To access a GoMax NX unit:

1. If the GoMax NX unit is not powered up, connect the power supply to the GoMax NX unit and turn it on. For more information, see *Connecting Power* on page 13.
2. Connect a computer to the switch using an Ethernet cable.



3. On the computer, using a web browser, connect to the GoMax NX web interface using the unit's IP address. The GoMax NX web interface is displayed. The **Settings** page is preselected.



You are now ready to start accelerating sensors; for more information, see *Starting and Stopping Acceleration* on the next page.

# Starting and Stopping Acceleration

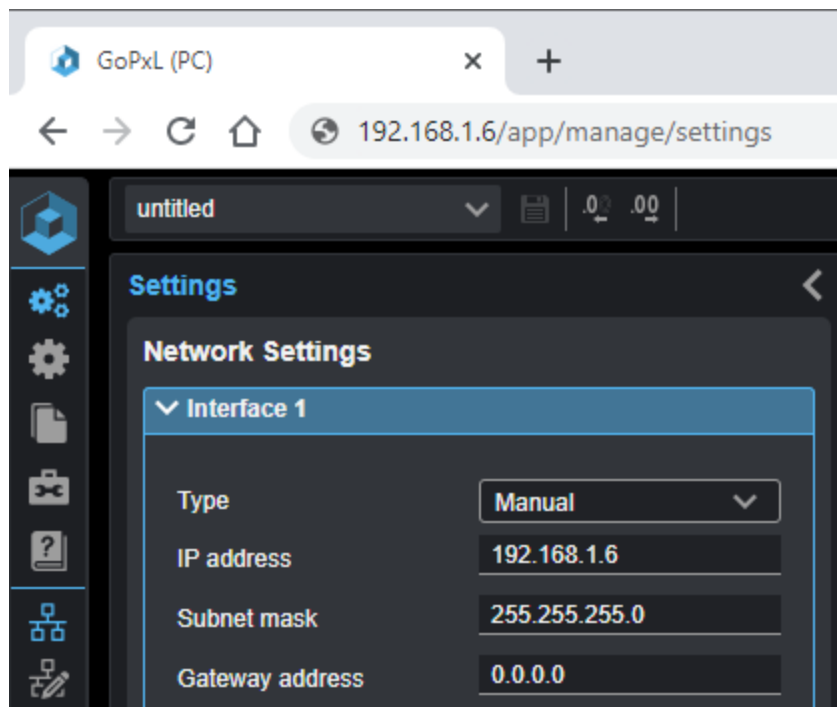
## Accelerating a Sensor

You accelerate a sensor through the web interface of the GoMax NX unit, simply by adding the sensor in the **Design** or **Discover** page. After you have connected the sensor, GoMax NX automatically accelerates it. To stop acceleration, you remove it from the unit in its user interface.

*To accelerate a sensor*

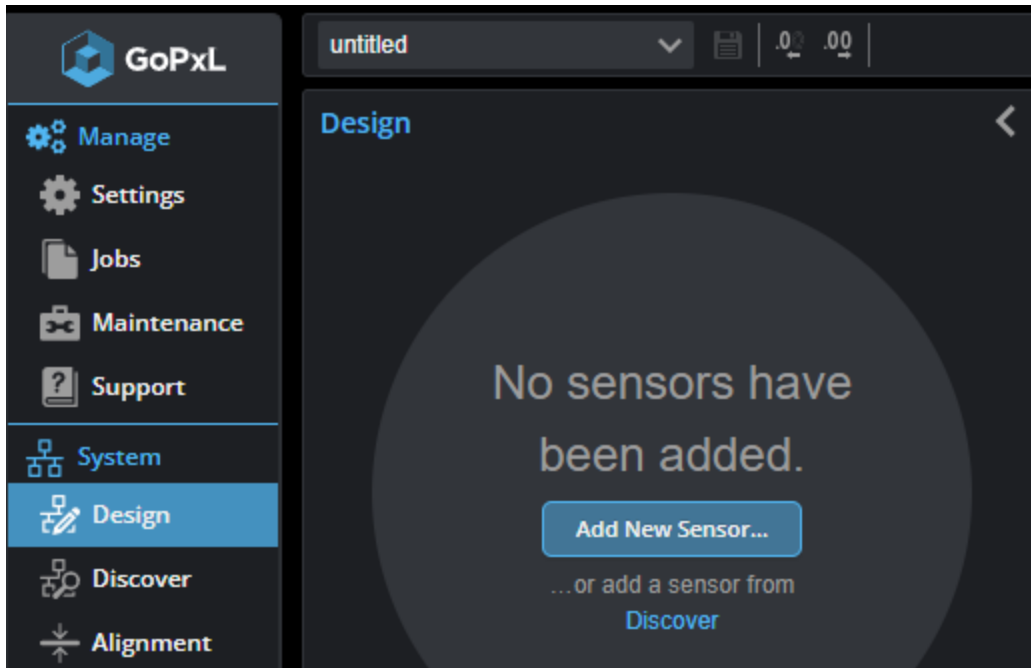
1. In your browser, connect to the GoMax NX unit.

By default, the unit's IP address is 192.168.1.6.

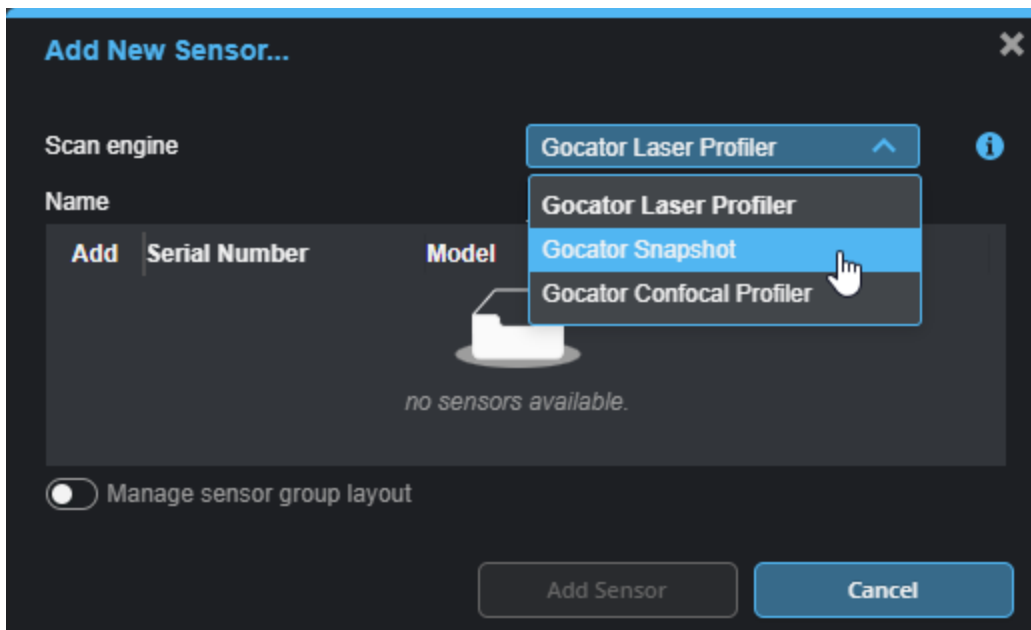


If you can't find the unit, see *Accessing GoMax NX* on page 24.

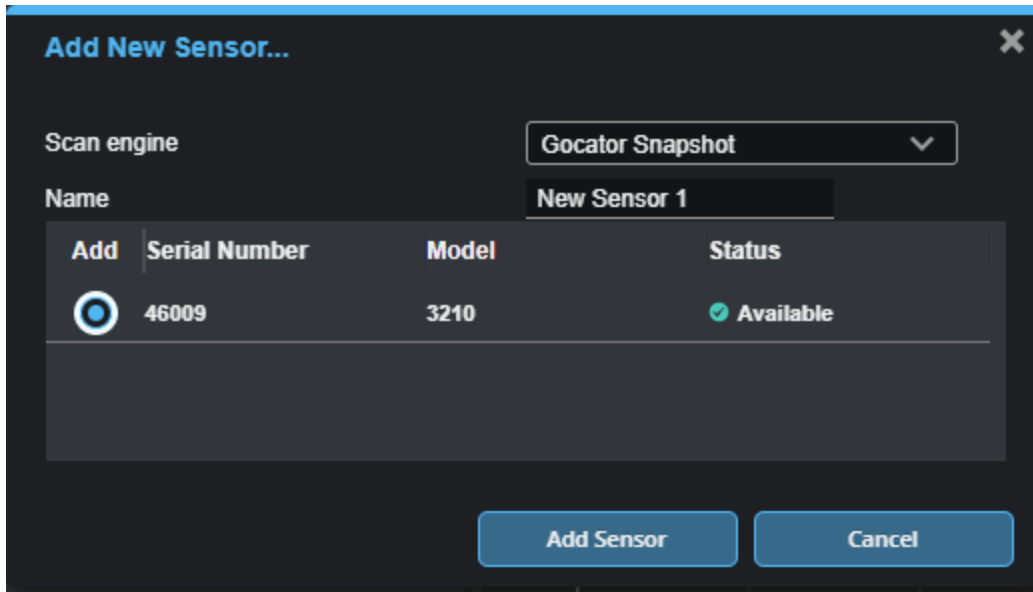
2. Go to the **System > Design** page and click **Add New Sensor...**



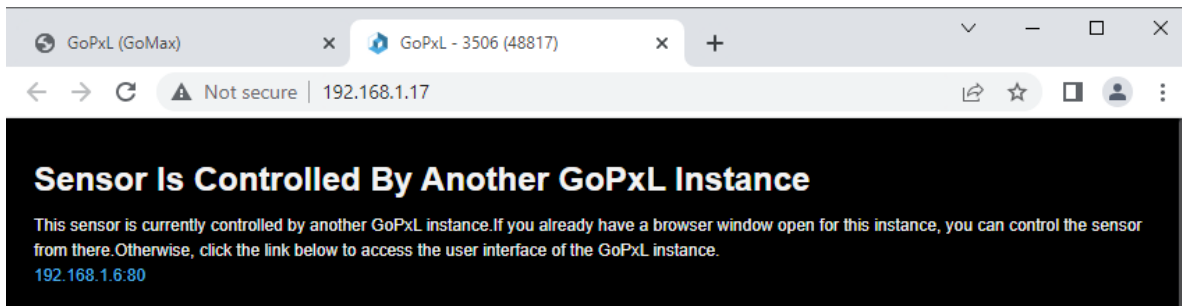
3. In **Add New Sensor**, choose the scan engine appropriate for your sensor.



4. Choose the sensor you want to add in the Add column in the table, and click **Add Sensor**.



The sensor is now added to the GoMax NX unit. GoMax NX automatically accelerates the sensor. You control and configure the sensor through the GoMax interface, and not the sensor's interface.



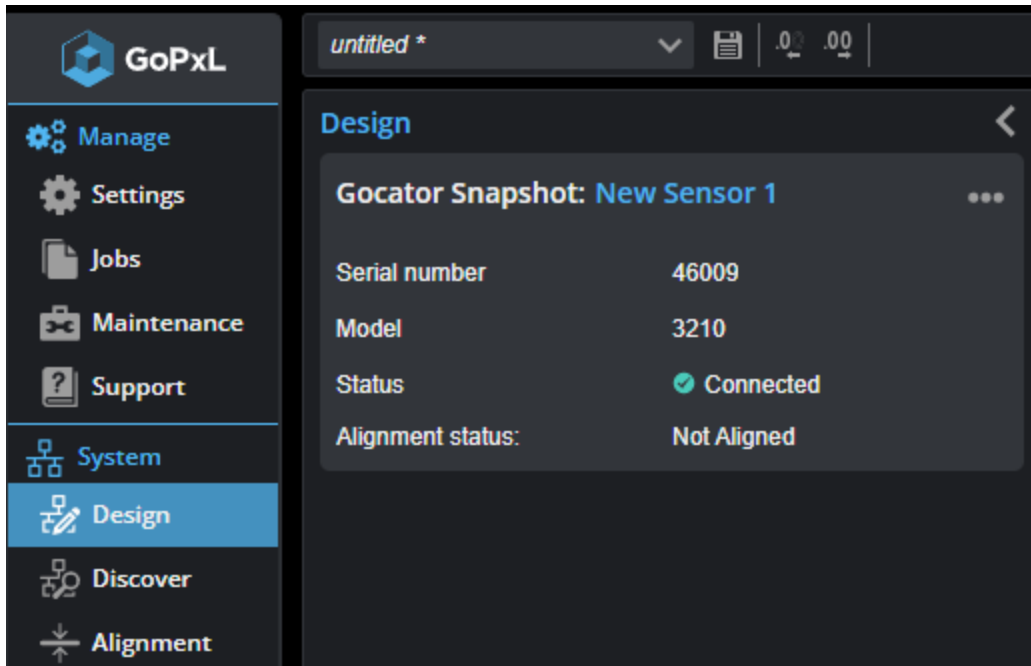
For more information, see the GoPXL user manual.

## Stopping Acceleration

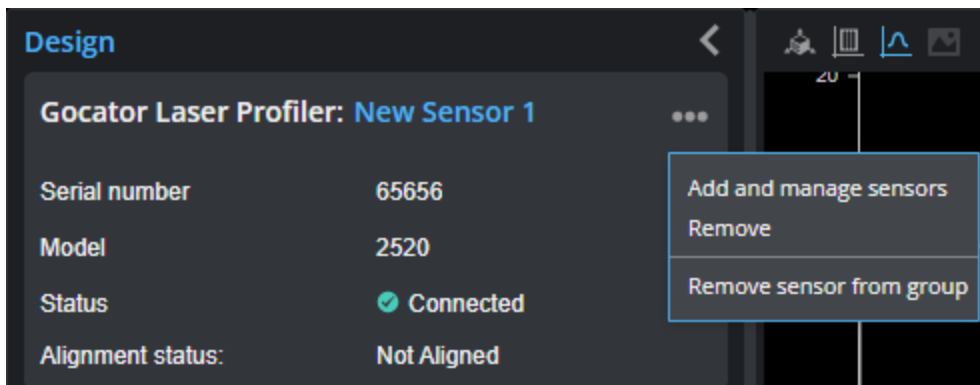
To stop accelerating a sensor, you remove it from the GoMax NX unit it's connected to.

*To stop accelerating a sensors*

1. In the GoPXL interface of the PC instance, go to the **System** > **Design** page.



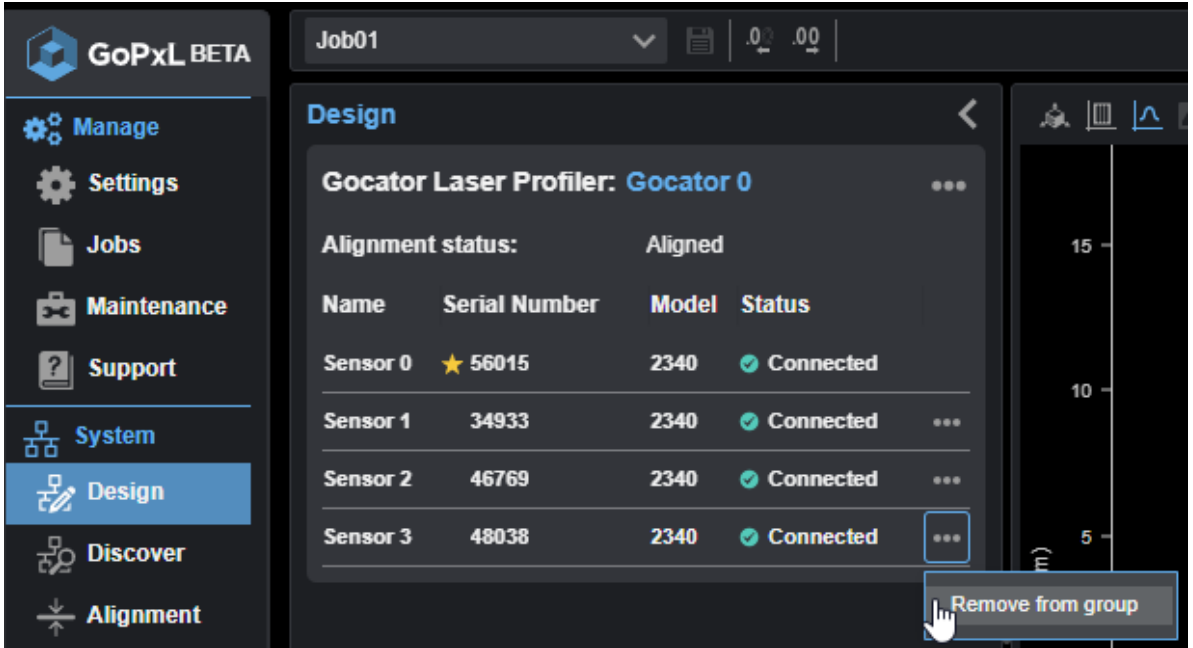
2. With single G2 sensors, click the three dots menu (⋮) and click **Remove** or **Remove sensor from group**.



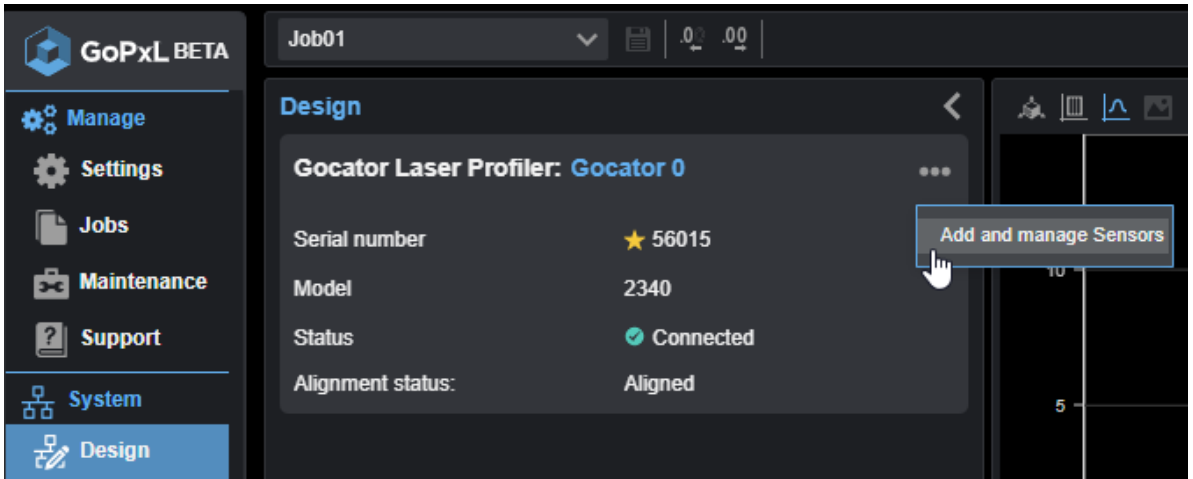
**Remove:** Choose this to remove the sensor and the sensor group containing it. If you have started configuring settings on the **Inspect > Scan** page, choose the next option instead.

**Remove sensor from the group:** Choose this if you have started configuring settings on the **Inspect > Scan** page and just need to add a different sensor to the sensor group.

3. With multi-sensor G2 systems, click the three dots menu (⋮) in the row containing the sensor you want to remove, and click **Remove from group**.



4. With G3 sensors, click the three dots menu (⋮), and choose **Remove**.

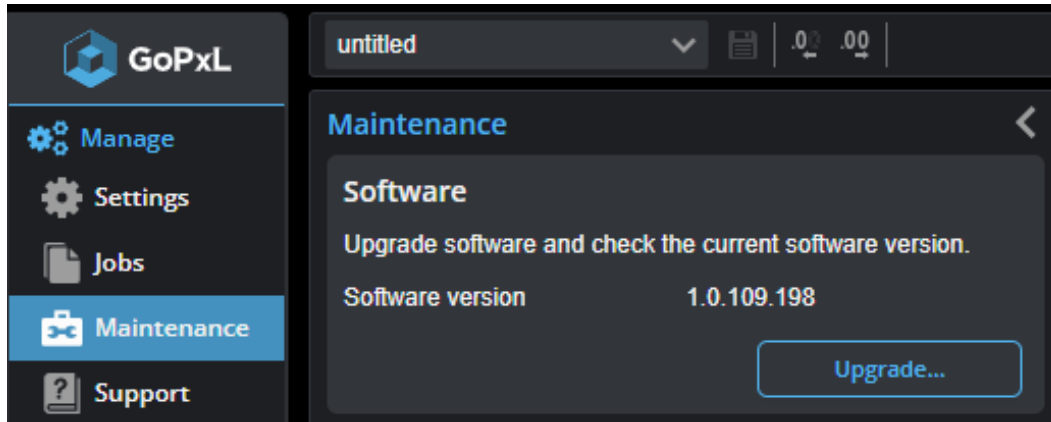


# Upgrading and Restoring GoMax NX



GoMax NX is *only* compatible with Gocator firmware 6.1 SR1 (firmware version 6.1.29.3) and later or GoPxL 1.0 and later. Loading an earlier firmware version will make the device unusable.

You upgrade the GoMax NX firmware on the **Manage > Maintenance** page.



GoMax NX firmware is available from the LMI Product Downloads page (<https://lmi3d.com/product-downloads/>).



The version of GoPxL running on the GoMax NX unit and the sensors must match in order for you to be able to accelerate a sensor.



Upgrading the GoMax NX unit or performing a factory restore stops acceleration.

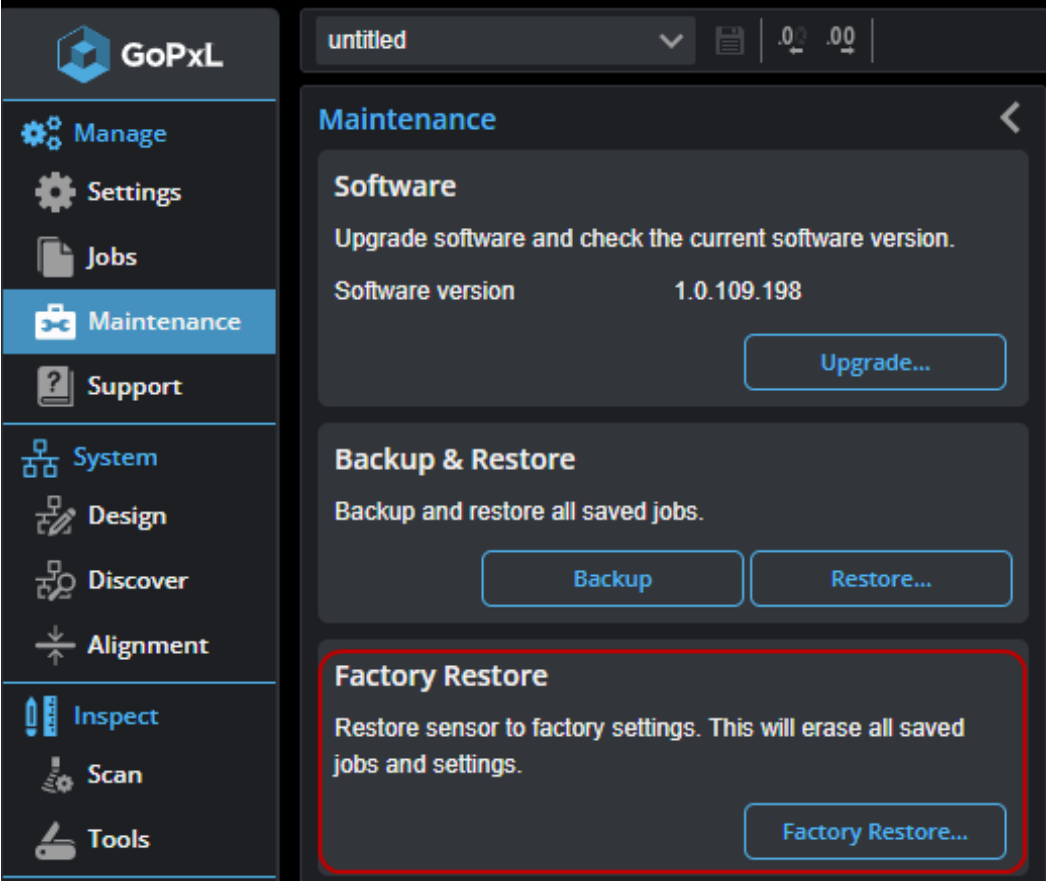


To upgrade a sensor's firmware, you must stop acceleration (remove it in the GoMax NX user interface), and then connect directly to the sensor's GoPxL interface to upgrade the sensor. For information on stopping acceleration, see *Stopping Acceleration* on page 28.



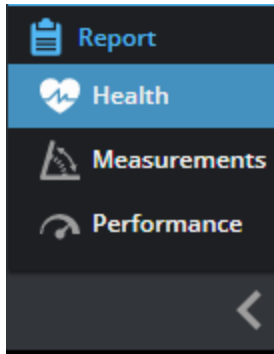
Do NOT disconnect power or the network connection from the GoMax NX unit while you are upgrading it.

To restore GoMax NX, go to **Manage > Maintenance**, and click **Factory Restore**.



# Monitoring the GoMax NX Health Status

Use the pages under the **Report** category to monitor the health status and other statistics.



For more information, see the GoPxL user manual.

# Specifications

## GoMax NX Specifications

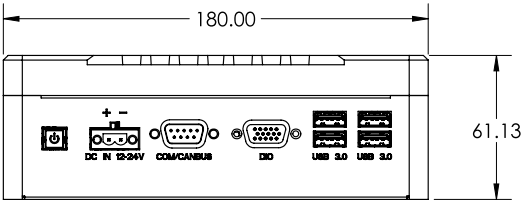
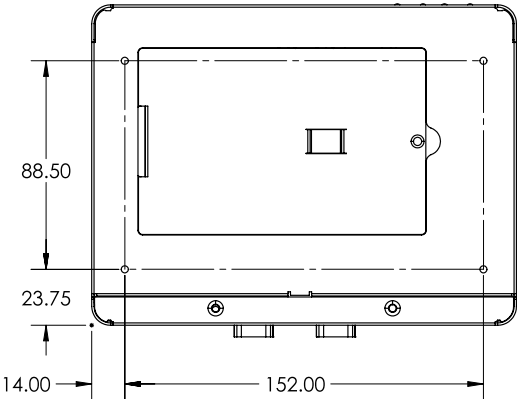
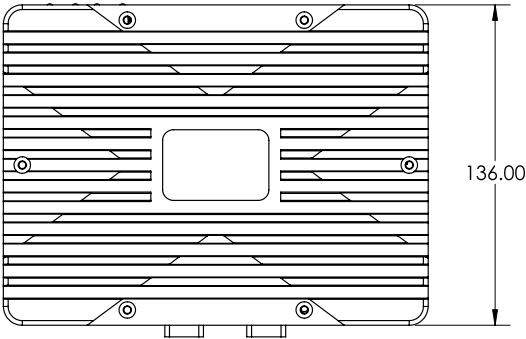
NVidia Module	Jetson Xavier NX
CPU	6-core NVidia Carmel ARM v8.2
GPU	Volta GPU, 384 CUDA cores, 48 Tensor cores
Memory	8 GB LPDDR4 onboard
Storage	16 GB eMMC onboard
Supported IO	2x Ethernet (ETH1 and ETH2)
Dimensions (mm)	180 x 136 x 61.1
Weight (kg)	2.1
Operating Temperature	-15 to 55 degrees Celsius
Input Voltage (Power)	+12 to +24 VDC (15 W)
Certifications	CE, FCC class A, RoHS, Reach
Mounting	DIN rail, wall mounting



The ETH3, HDMI, and USB ports are reserved for future use.

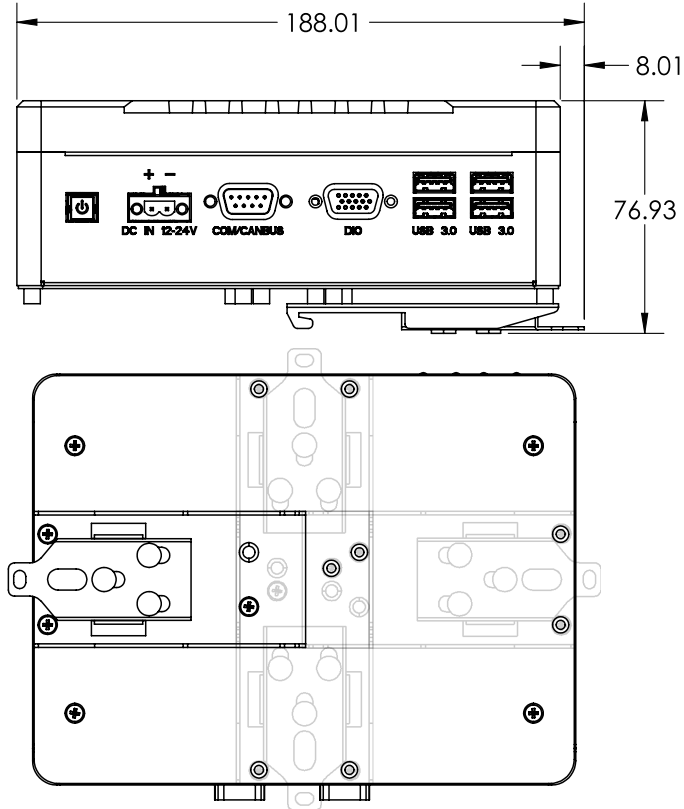
# GoMax NX

The ETH3, HDMI, and USB ports are reserved for future use.

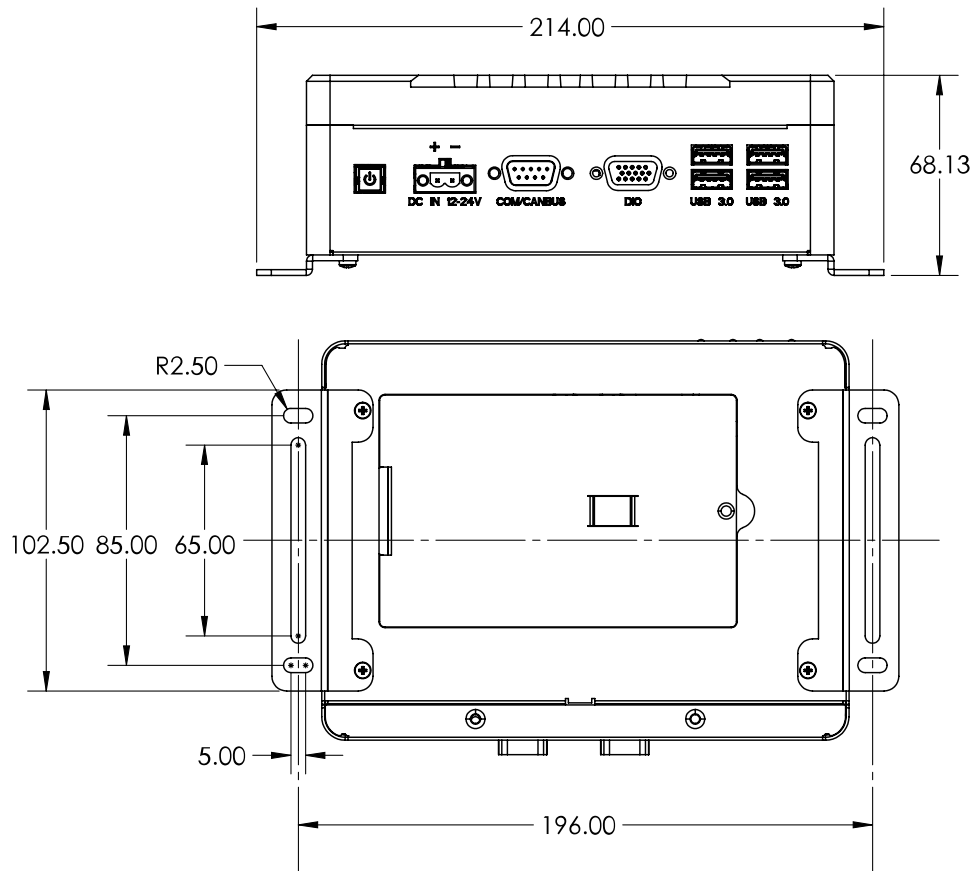


## DIN rail mount dimensions

THERE ARE MULTIPLE MOUNTING POSITIONS FOR THE DIN MOUNT DEPENDING ON YOUR ANGLE REQUIREMENTS.



## Wall mount dimensions



# Troubleshooting

Review the guidance in this chapter if you are experiencing difficulty with a GoMax NX unit.

## **Mechanical/Environmental**

The unit is warm.

- It is normal for a GoMax NX unit to be warm when powered on.

## **Connection**

When attempting to connect to the GoMax NX unit with a web browser, the unit is not found (page does not load).

- Verify that the GoMax NX unit is powered on and connected to the client computer network. The power indicator LED should illuminate when it is powered.
- Check that the client computer's network settings are properly configured.
- Use IP scanning software to verify the IP address of the GoMax NX unit. For more information, see *Discovering a GoMax NX IP Address* on page 18.

## **Performance**

The CPU level is near 100%.

- Consider reducing the speed. If you are using a time or encoder trigger source, consider reducing the speed. If you are using an external input or software trigger, consider reducing the rate at which you apply triggers.
- Consider reducing the resolution of the sensors in the system.
- Review the measurements that you have programmed and eliminate any unnecessary measurements.

# Return Policy

## **Return Policy**

Before returning the product for repair (warranty or non-warranty) a Return Material Authorization (RMA) number must be obtained from LMI. Please call LMI to obtain this RMA number.

Carefully package the GoMax unit in its original shipping materials (or equivalent) and ship the unit prepaid to your designated LMI location. Please ensure that the RMA number is clearly written on the outside of the package. Inside the return shipment, include the address you wish the shipment returned to, the name, email and telephone number of a technical contact (should we need to discuss this repair), and details of the nature of the malfunction. For non-warranty repairs, a purchase order for the repair charges must accompany the returning unit.

LMI Technologies Inc. is not responsible for damages to a unit that are the result of improper packaging or damage during transit by the courier.

# Software Licenses

## **jQuery**

Website:

<http://jquery.com/>

License:

Copyright (c) 2011 John Resig, <http://jquery.com/>

Permission is hereby granted, free of charge, to any person obtaining a copy of this software and associated documentation files (the "Software"), to deal in the Software without restriction, including without limitation the rights to use, copy, modify, merge, publish, distribute, sublicense, and/or sell copies of the Software, and to permit persons to whom the Software is furnished to do so, subject to the following conditions:

The above copyright notice and this permission notice shall be included in all copies or substantial portions of the Software.

THE SOFTWARE IS PROVIDED "AS IS", WITHOUT WARRANTY OF ANY KIND, EXPRESS OR IMPLIED, INCLUDING BUT NOT LIMITED TO THE WARRANTIES OF MERCHANTABILITY, FITNESS FOR A PARTICULAR PURPOSE AND NONINFRINGEMENT. IN NO EVENT SHALL THE AUTHORS OR COPYRIGHT HOLDERS BE LIABLE FOR ANY CLAIM, DAMAGES OR OTHER LIABILITY, WHETHER IN AN ACTION OF CONTRACT, TORT OR OTHERWISE, ARISING FROM, OUT OF OR IN CONNECTION WITH THE SOFTWARE OR THE USE OR OTHER DEALINGS IN THE SOFTWARE.

## **jQuery.CopyEvents**

Website:

<http://brandaaron.net>

License:

Copyright (c) 2006 Brandon Aaron

Licensed under the MIT License (<http://www.opensource.org/licenses/mit-license.php>)

## **jQuery.history**

License:

jQuery history plugin

Copyright (c) 2006 Taku Sano (Mikage Sawatari)

Licensed under the MIT License (<http://www.opensource.org/licenses/mit-license.php>)

Modified by Lincoln Cooper to add Safari support and only call the callback once during initialization for msie when no initial hash supplied. API rewrite by Lauris Bukis-Haberkorns

### **jQuery.mouseWheel**

Website:

<http://brandonaron.net>

License:

Copyright (c) 2010 Brandon Aaron

Licensed under the MIT License (<http://www.opensource.org/licenses/mit-license.php>)

### **jQuery.scaling**

Website:

<http://eric.garside.name>

License:

Scaling 1.0 - Scale any page element

Copyright (c) 2009 Eric Garside

Licensed under the MIT License (<http://www.opensource.org/licenses/mit-license.php>)

### **jQuery.scrollFollow**

Website:

<http://kitchen.net-perspective.com/>

License:

Copyright (c) 2008 Net Perspective

Licensed under the MIT License (<http://www.opensource.org/licenses/mit-license.php>)

**node**

Website:

<https://github.com/nodejs/node>

License:

<https://github.com/nodejs/node/blob/master/LICENSE>

# Support

For help with a component or product, please submit an online support ticket using LMI's [Help Desk](http://support.lmi3d.com/newticket.php) at <http://support.lmi3d.com/newticket.php>.

If you are unable to use the Help Desk or prefer to contact LMI by phone or email, use the contact information below.



Response times for phone or email support requests are longer than requests submitted through the Help Desk.

## North America

---

Phone	+1 604 636 1011
Fax	+1 604 516 8368
Email	support@lmi3d.com

## Europe

---

Phone	+31 45 850 7000
Fax	+31 45 574 2500
Email	support@lmi3d.com

For more information on safety and laser classifications, please contact:

*U.S. Food and Drug Administration  
Center for Devices and Radiological Health  
WO66-G609  
10903 New Hampshire Avenue  
Silver Spring MD 20993-0002  
USA*

# Contact

<b>Americas</b>	<b>EMEAR</b>	<b>ASIA PACIFIC</b>
LMI Technologies (Head Office) Burnaby, Canada +1 604 636 1011	LMI Technologies GmbH Berlin, Germany +49 (0)3328 9360 0	LMI (Shanghai) Trading Co., Ltd. Shanghai, China +86 21 5441 0711

LMI Technologies has sales offices and distributors worldwide. All contact information is listed at [lmi3d.com/contact/locations](https://lmi3d.com/contact/locations).